

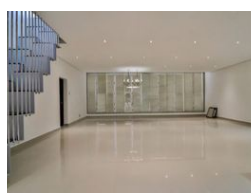
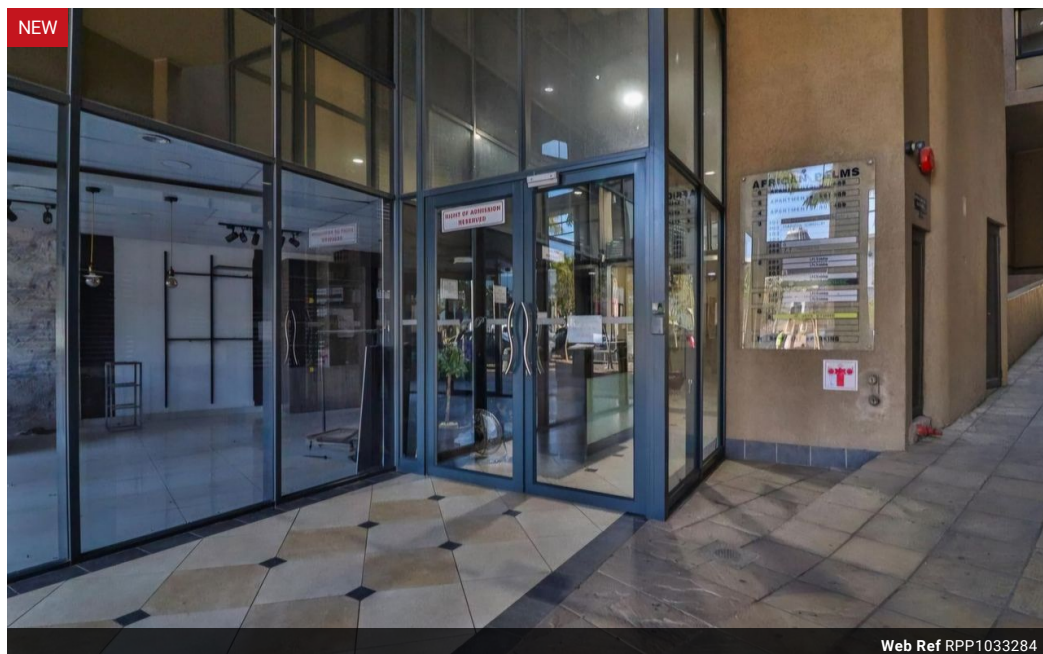


Suhaifa Imam
073 007 1251
suhaifa@primeproperty.co.za

Contact Prime Property
Umhlanga

031 566 5416

Shop 5
7 on Millennium Boulevard
Umhlanga Ridge
4321



R35,000 pm

Lease Period 12 months
Annual Escalation -

Availability Immediately **Deposit** -

 4  4  2

Modern Luxury living with Coastal Convenience

Step into upscale urban living with this spacious 4-bedroom penthouse perfectly positioned in the heart of Umhlanga, just steps away from the vibrant Gateway precinct. This stylish residence features an open-plan lounge and dining area, a fully fitted modern kitchen, and four generously sized bedrooms with built-in cupboards and sleek finishes throughout. Large windows invite natural light, creating a warm and inviting atmosphere. The master bedroom includes a private en-suite bathroom, while the additional rooms offer flexibility for family, guests, or a home office. Enjoy the convenience of secure parking, 24-hour security, and unbeatable proximity to top restaurants, shopping, and entertainment—all just outside your doorstep.

Features

Interior

Bedrooms	4
Bathrooms	4
Kitchens	1
Recep. Rooms	2
Furnished	No

Exterior

Garages	2
Carports / Parkings	2
Security	Yes
Pool	No
Views	False

Sizes

Floor Size	337m ²
------------	-------------------