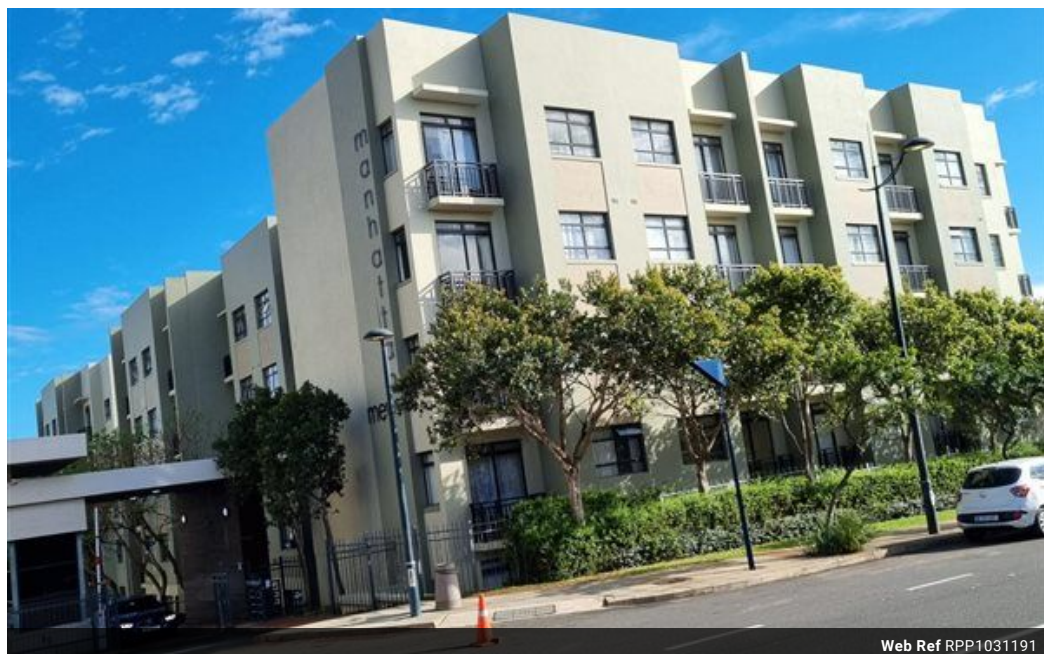


Nokukhanya Masondo
0676153482
nokukhanya@primepropertysa.com

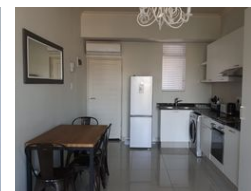
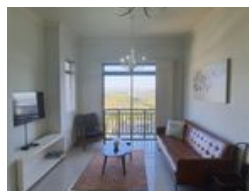
Contact Prime Property
Umhlanga

031 566 5416

Shop 5
7 on Millennium Boulevard
Umhlanga Ridge
4321



Web Ref RPP1031191



R1,195,000

 2  1

Monthly Bond Repayment R12,334.65
Calculated over 20 years at 11% with no deposit.

Transfer Costs R32,749.00 **Bond Costs** R25,220.00
These calculations are only a guide. Please ask your conveyancer for exact calculations.

Monthly Levy R1,200 **Monthly Rates** R1,000

Spacious Two Bedroom Apartment

Prime Property presents an apartment nestled within Manhattan Mews in Umhlanga Ridge.

Key property features include tiled open plan living and dining area. The fully fitted kitchen boasts convenience and functionality, while the bedrooms offer ample built-in storage space.

Situated within proximity to premier shopping destinations such as Gateway Theatre of Shopping Centre, Cornubia Mall, and The Crescent, as well as an array of amenities.

This apartment block has 24-hour security with access control.

Rest easy knowing that 24-hour security with access control is in place, providing you with a safe and secure living environment.

Call today for an exclusive viewing!

Features

Interior

Bedrooms	2
Bathrooms	1
Kitchens	1
Recep. Rooms	2
Furnished	No

Exterior

Carports / Parkings	2
Security	Yes
Pool	Yes
Views	True