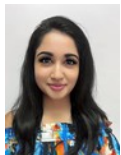




Ryan Nundlall
0719169585
ryan@primepropertysa.com



Sarisha Moodley
0684813594

sarisha@primepropertysa.com

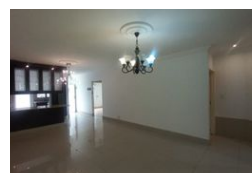
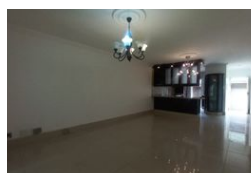
Contact Prime Property
Umhlanga

031 566 5416

Shop 5
7 on Millennium Boulevard
Umhlanga Ridge
4321



Web Ref RPP1032586



R2,695,000

3 Bedrooms, 2 Bathrooms, 2 Carports

Monthly Bond Repayment R27,817.48
Calculated over 20 years at 11% with no deposit.

Transfer Costs R133,487.00 **Bond Costs** R40,300.00
These calculations are only a guide. Please ask your conveyancer for exact calculations.

Monthly Levy R2,700 **Monthly Rates** R1,700

3 Bedroom Town House For Sale In Mount Edgecombe

Prime Property presents:

This beautifully maintained, modern townhouse offers the perfect combination of space, comfort, and convenience. Located in the sought-after suburb of Somerset Park, Umhlanga, this home is just a short drive from the vibrant Umhlanga, popular shopping destinations like Gateway Theatre of Shopping, as well as top schools and medical facilities.

3 Spacious Bedrooms

The townhouse features three generously sized bedrooms, all with built-in cupboards and large windows for plenty of natural light. The master bedroom includes an en-suite bathroom with a bathtub and modern fixtures. The other two bedrooms share a well-appointed family bathroom with a shower.

The open plan living and dining area creates a seamless flow, perfect for both family living and entertaining. The space is light and airy, with...

Features

Interior		Exterior		Sizes	
Bedrooms	3	Garages	2	Floor Size	124m ²
Bathrooms	2	Carports / Parkings	2		
Kitchens	1	Security	No		
Recep. Rooms	2	Pool	No		
Furnished	No	Views	True		

