



Manisha Pramraj
079 460 9017
manisha@primepropertysa.com

Contact Prime Property
Umhlanga

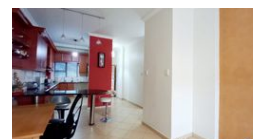
031 566 5416

Shop 5
7 on Millennium Boulevard
Umhlanga Ridge
4321

NEW



Web Ref RPP1029035



R1,950,000

🛏 2 🚿 2 🚗 1

Monthly Bond Repayment R20,127.67

Calculated over 20 years at 11% with no deposit.

Transfer Costs R72,206.00 **Bond Costs** R32,760.00

These calculations are only a guide. Please ask your conveyancer for exact calculations.

Monthly Levy R2,082

2 Bedroom Apartment For Sale in New Town Centre

Own Your Own with Prime Property Umhlanga

Prime Property presents, a spacious two bed, two bath apartment situated in the heart of Umhlanga. This unit has a fitted kitchen and open plan lounge. The two bedrooms have built in cupboards. Parking is undercover with drive up access directly to unit. Situated just across from Gateway Mall and close to all amenities. This unit is a must see!

Features

Interior

Bedrooms	2
Bathrooms	2
Kitchens	1
Recep. Rooms	1
Furnished	No

Exterior

Garages	1
Carports / Parkings	1
Security	Yes
Pool	Yes
Views	False

Sizes

Floor Size	92m ²
------------	------------------



<https://www.primepropertysa.com>