

**Byrone Athman**  
0728205272  
byrone@primepropertyisa.com

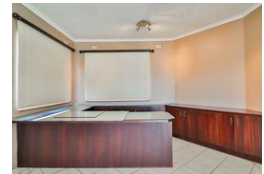
Contact Prime Property Umhlanga

031 566 5416

Shop 5  
7 on Millennium Boulevard  
Umhlanga Ridge  
4321



Web Ref RPP1032361



**R6,100,000**

 4  4  2

**Monthly Bond Repayment** R62,963.49

Calculated over 20 years at 11% with no deposit.

**Transfer Costs** R534,766.00 **Bond Costs** R70,535.00

These calculations are only a guide. Please ask your conveyancer for exact calculations.

**Monthly Rates** R8,000

### Elegant 4-Bedroom Family Home in Umhlanga

Set in a tranquil and private road in Umhlanga, this exquisite family home offers a harmonious blend of modern living and serene outdoor spaces. The lower level features three generously-sized bedrooms, all designed with comfort in mind, while the luxurious master suite is located upstairs, offering added privacy and a private balcony with stunning views.

The home's spacious living areas include a cozy lounge, a formal lounge perfect for entertaining, and a well-appointed study, ideal for work or relaxation. The heart of the home is the open-plan dining area, which flows seamlessly into a beautifully designed kitchen with a separate scullery for added convenience.

Step outside to discover an expansive entertainment area, perfect for hosting guests, along with a covered patio that overlooks the lush, landscaped garden and...

### Features

**Pets Allowed** Yes

#### Interior

Bedrooms	4
Bathrooms	4
Kitchens	1
Recep. Rooms	3
Studies	1
Furnished	No

#### Exterior

Garages	2
Carports / Parkings	5
Security	Yes
Dom. Accom.	1
Pool	Yes
Views	True

#### Sizes

Land Size	1,266m <sup>2</sup>
-----------	---------------------