



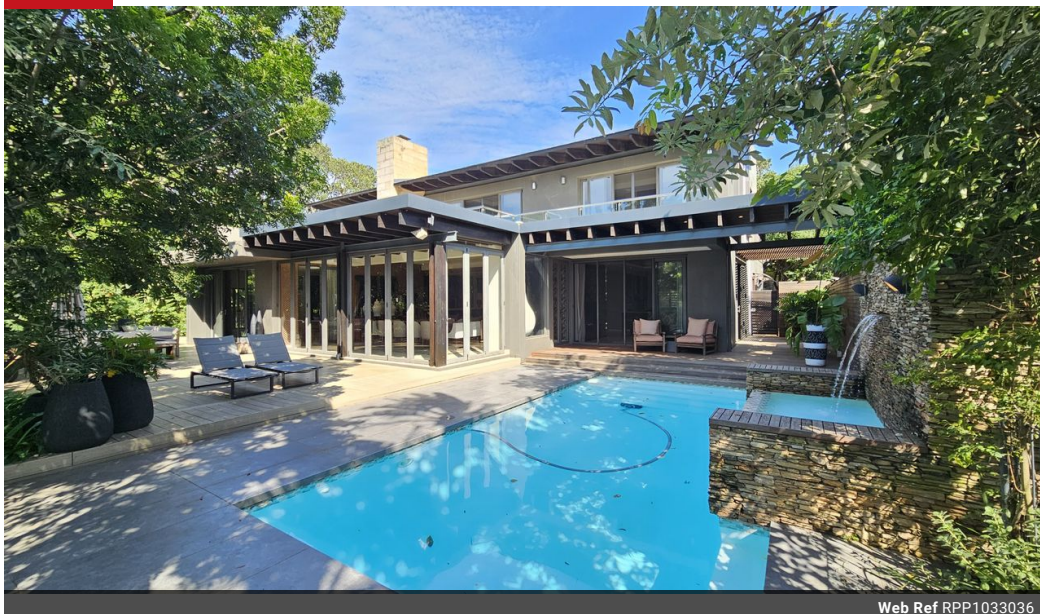
**Yolán Marimuthu**  
082 055 8559  
yolan@primeproperty.com

Contact Prime Property Umhlanga

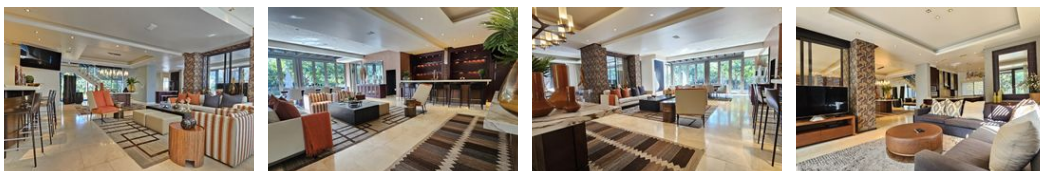
031 566 5416

Shop 5  
7 on Millennium Boulevard  
Umhlanga Ridge  
4321

FEATURED



Web Ref RPP1033036



**R15,995,000**

4 4.5 2

**Monthly Bond Repayment** R165,098.53  
Calculated over 20 years at 11% with no deposit.

**Transfer Costs** R1,729,871.00 **Bond Costs** R113,285.00

These calculations are only a guide. Please ask your conveyancer for exact calculations.

**Monthly Levy** R7,760 **Monthly Rates** R9,800

Welcome to this masterpiece in Hawaan Forest Estate!

Prime property presents...  
This luxurious home that will completely blow your mind.

The interiors feature high-end finishes, including polished flooring, designer lighting, and exquisite fixtures that complement the home's contemporary aesthetic.

The open-plan living spaces are the heart of the home, with a stunning kitchen that boasts top-of-the-line-appliances and ample counter space for preparing meals. The kitchen flows effortlessly into the dining and lounge areas, where large sliding doors open to the outdoor entertainment area. This seamless connection between the indoor and outdoor spaces creates an ideal setting for both relaxed family time and stylish entertaining.

The four spacious bedrooms each come with built-in wardrobes, air conditioning, and en-suite bathrooms that exude a sense of luxury, with modern...

Features

Interior		Exterior		Sizes	
Bedrooms	4	Garages	2	Floor Size	504m <sup>2</sup>
Bathrooms	4.5	Carports / Parkings	2	Land Size	991m <sup>2</sup>
Kitchens	1	Security	Yes		
Recep. Rooms	3	Pool	Yes		
Studies	1	Views	True		
Furnished	No				