



Mayur Soni
0722350144
mayur@primeproperty.com



Raj Maharaj
061 431 1771

raj@primeproperty.com

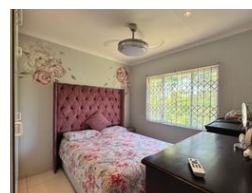
Contact Prime Property
Umhlanga

031 566 5416

Shop 5
7 on Millennium Boulevard
Umhlanga Ridge
4321



Web Ref RPP1032377



R1,700,000

2 1 1

Monthly Bond Repayment R17,547.20
Calculated over 20 years at 11% with no deposit.

Transfer Costs R55,039.00 **Bond Costs** R30,875.00

These calculations are only a guide. Please ask your conveyancer for exact calculations.

Monthly Levy R1,480 **Monthly Rates** R1,450 **Sectional Title Levy** R1
Special Levy R1

Luxurious and Elegant 2 Bedroom Simplex Available For Sale in the Prestigious Westlake Estate

This charming and cozy two-bedroom, one-bathroom simplex nestled within the secure confines of an exclusive estate. This inviting residence offers a perfect blend of comfort and security, ideal for those seeking peace of mind and a sense of community.

As you step inside, you're welcomed into an open-plan layout that seamlessly integrates the lounge, dining area, and kitchen.

The kitchen is thoughtfully designed with modern amenities and ample storage space, and practical.

This simplex features two well-appointed bedrooms, offering cozy retreats for rest and relaxation. Each bedroom provides ample space. The shared bathroom boasts contemporary fixtures and finishes, providing a refreshing oasis for daily routines.

Convenience and security are paramount within the estate, with the inclusion of a single garage offering...

Features

Interior

Bedrooms	2
Bathrooms	1
Kitchens	1
Recep. Rooms	2
Furnished	No

Exterior

Garages	1
Carports / Parkings	1
Security	No
Pool	No
Views	False

Sizes

Floor Size	93m ²
Land Size	1m ²