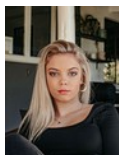




Willow Prinsloo
0766759908
willow@primepropertysa.com



Mon'e Meiring
065 075 5229

mon'e@primepropertysa.com



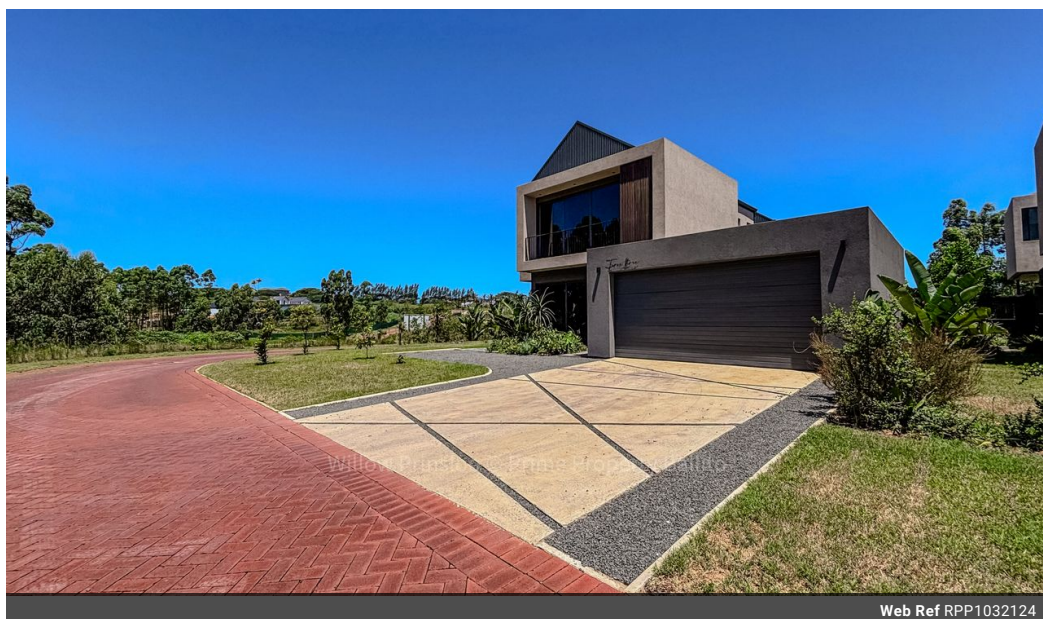
Jade De Wet
0765035771

jade@primepropertysa.com

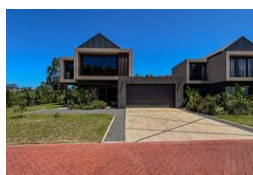
Contact Prime Property
Umhlanga

031 566 5416

Shop 5
7 on Millennium Boulevard
Umhlanga Ridge
4321



Web Ref RPP1032124



R4,950,000

3 2.5 2

Monthly Bond Repayment R51,093.33
Calculated over 20 years at 11% with no deposit.

Transfer Costs R396,845.00 **Bond Costs** R61,035.00
These calculations are only a guide. Please ask your conveyancer for exact calculations.

Monthly Levy R3,300 **Monthly Rates** R2,900

Newly built 3-bedroom modern family home set in the serene natural environment of Elaleni!

Discover the ultimate blend of luxury and nature with this exquisite 3-bedroom, 2.5-bathroom townhouse in the renowned Elaleni Coastal Forest Estate. Designed with modern sophistication in mind, this home boasts bright, open-plan living spaces, sleek finishes, and seamless indoor-outdoor flow to a private, landscaped garden—ideal for entertaining or unwinding.

This home includes a very impressive inverter & solar system to battle power outages. Additionally the light steal frame of the house offers a 50 year materials warranty!

Living in Elaleni is more than just owning a home; it's a lifestyle like no other. The estate offers an array of world-class amenities to enrich your everyday life. Take leisurely strolls or morning jogs along picturesque walking trails surrounded by lush forest. Enjoy fresh, organic produce from the...

Features

Pets Allowed	Yes		
Interior		Exterior	Sizes
Bedrooms	3	Garages	2
Bathrooms	2.5	Carports / Parkings	3
Kitchens	1	Security	Yes
Recep. Rooms	2	Pool	Yes
Furnished	No	Views	True
			Floor Size
			195m ²