



Mohammed Moola
073 407 8621
mo@primepropertyysa.com



Yolana Marimuthu
082 055 8559

yolana@primepropertyysa.com

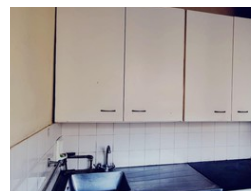
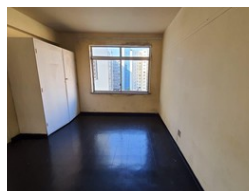
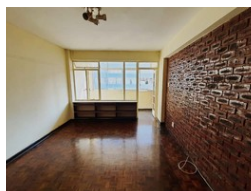
Contact North Beach

031 031 566 5416

Shop 5, 7 on Millennium
7 Millennium Boulevard
Umhlanga
4319



Web Ref RPP22852



R700,000

1.5 1

Monthly Bond Repayment R7,225.32

Calculated over 20 years at 11% with no deposit.

Transfer Costs R23,730.00 **Bond Costs** R17,680.00

These calculations are only a guide. Please ask your conveyancer for exact calculations.

Earthly Haven

Earthly Haven. This apartment has natural earth tones which creates the perfect canvas for creating your personalized masterpiece. It has a lovely sun room area which is perfect for a breakfast or reading area. The living area is spacious and leads to a cosy dining area. The kitchen has fitted cupboards with ample space and connections for appliances. There is an awesome view from the apartment which is walking distance to uShaka Marine World.

Safe and secure , undercover parking **BOOK A VIEWING TODAY**

Features

Interior

Bedrooms	1.5
Bathrooms	1
Kitchens	1
Recep. Rooms	2

Exterior

Carports / Parkings	1
Security	Yes
Pool	No