

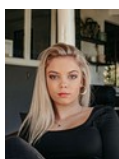


Willow Prinsloo
0766759908
willow@primepropertysa.com



Jade De Wet
0765035771

jade@primepropertysa.com



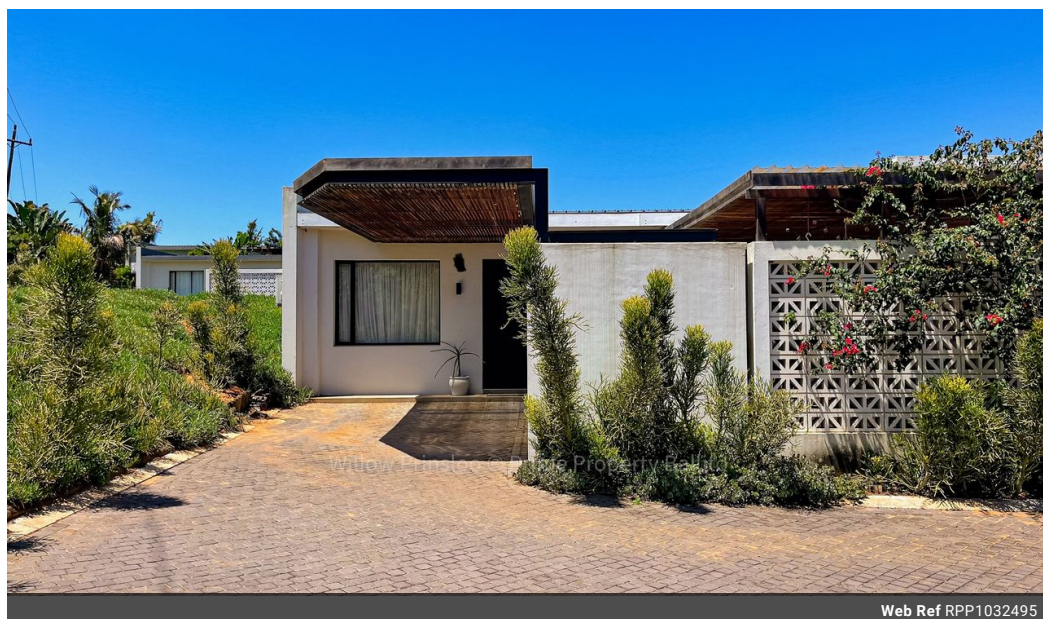
Mon'e Meiring
065 075 5229

mon'e@primepropertysa.com

Contact Prime Property
Umhlanga

031 566 5416

Shop 5
7 on Millennium Boulevard
Umhlanga Ridge
4321



Web Ref RPP1032495



R3,387,500

2 2

Monthly Bond Repayment R34,965.38
Calculated over 20 years at 11% with no deposit.

Transfer Costs R207,172.00 **Bond Costs** R45,955.00
These calculations are only a guide. Please ask your conveyancer for exact calculations.

Monthly Levy R3,000 **Monthly Rates** R2,200

Super Private & air-conditioned 2-bedroom townhouse at Elaleni Estate in Ballito!

Step into a world of modern luxury with this exclusive 2-bedroom townhouse nestled within the serene Elaleni. Inspired by the timeless charm of Santorini, this home boasts a striking whitewashed exterior that perfectly complements the lush green surroundings. As you enter, the dark, sophisticated interior finishes create a bold contrast, offering a contemporary yet inviting atmosphere.

Each bedroom is a private oasis of comfort, with large windows that frame picturesque forest views, bringing the tranquility of nature right into your space. The master suite features an elegant en-suite bathroom, designed with sleek accents that elevate the feel of opulence.

The open-plan living area, adorned with modern finishes, flows seamlessly into a designer kitchen – ideal for entertaining or enjoying quiet evenings at home. Large...

Features

| | | | | |
|---------------------|-----|---------------------|------|-------------------|
| Pets Allowed | Yes | | | |
| Interior | | Exterior | | Sizes |
| Bedrooms | 2 | Carports / Parkings | 2 | Floor Size |
| Bathrooms | 2 | Security | Yes | 102m ² |
| Kitchens | 1 | Pool | Yes | |
| Recep. Rooms | 2 | Views | True | |
| Furnished | No | | | |