

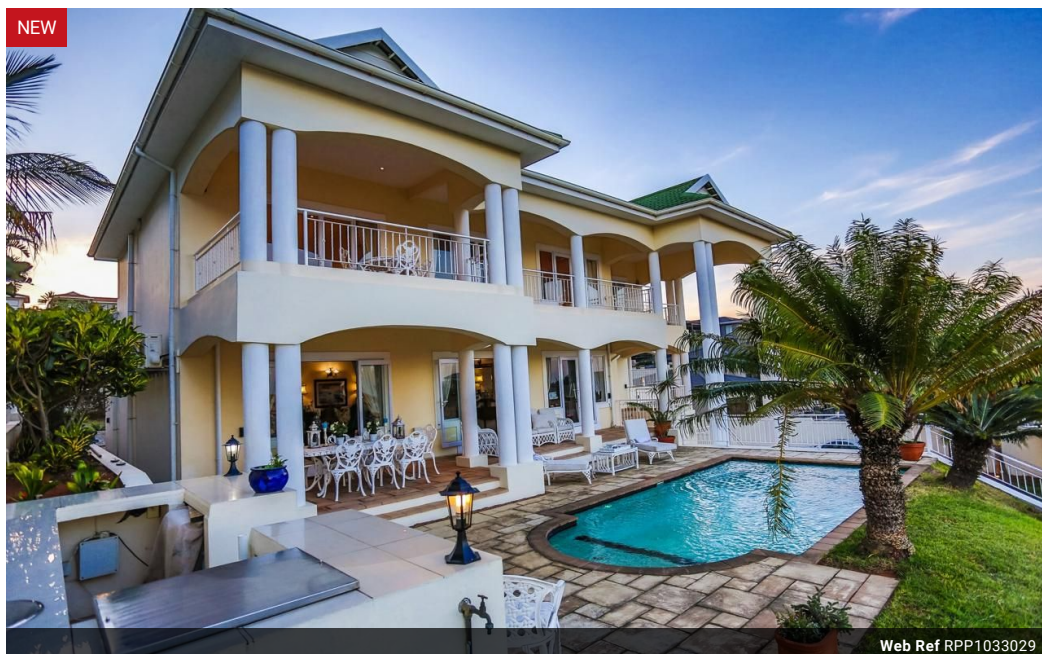


**Willow Prinsloo**  
0766759908  
willow@primepropertysa.com

Contact Prime Property Umhlanga

031 566 5416

Shop 5  
7 on Millennium Boulevard  
Umhlanga Ridge  
4321



Web Ref RPP1033029



**R8,950,000**

🛏️ 6   🚿 5   🚗 2

**Monthly Bond Repayment** R92,380.86  
Calculated over 20 years at 11% with no deposit.

**Transfer Costs** R859,714.00   **Bond Costs** R80,035.00  
These calculations are only a guide. Please ask your conveyancer for exact calculations.

**Monthly Rates** R4,500

### 6 Bedroom House For Sale in Ballito Central

Exquisite Dual-Residence Coastal Retreat in Sheffield Beach, Ballito

Discover an extraordinary coastal property that seamlessly blends elegance, security, and functionality. Perfectly positioned in a tranquil and upmarket neighborhood, this exclusive estate offers two impeccably designed homes on one expansive stand, boasting a total of 820 square meters under roof. With breathtaking sea views, world-class craftsmanship, and premium finishes, this is a rare opportunity to own a property built to European construction standards by an award-winning British builder.

-A Masterpiece of Design and Craftsmanship:  
Meticulously designed and built 15 years ago with the finest materials, this estate has been maintained to perfection, showing no signs of wear despite the coastal climate. The main residence is an architectural gem...

### Features

<b>Pets Allowed</b>	Yes				
<b>Interior</b>		<b>Exterior</b>		<b>Sizes</b>	
Bedrooms	6	Garages	2	Floor Size	810m <sup>2</sup>
Bathrooms	5	Carports / Parkings	15	Land Size	1,154m <sup>2</sup>
Kitchens	2	Security	Yes		
Recep. Rooms	4	Dom. Accom.	1		
Studies	2	Pool	Yes		
Furnished	No	Views	True		

