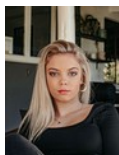




**Willow Prinsloo**  
0766759908  
willow@primepropertysa.com



**Mon'e Meiring**  
065 075 5229

mon'e@primepropertysa.com



**Jade De Wet**  
0765035771

jade@primepropertysa.com

Contact Prime Property  
Umhlanga

031 566 5416

Shop 5  
7 on Millennium Boulevard  
Umhlanga Ridge  
4321



Web Ref RPP1032429



**R3,500,000**

3 3 2

**Monthly Bond Repayment** R36,126.59  
Calculated over 20 years at 11% with no deposit.

**Transfer Costs** R221,714.00 **Bond Costs** R47,840.00  
These calculations are only a guide. Please ask your conveyancer for exact calculations.

**Monthly Levy** R2,400 **Monthly Rates** R2,190

Very Well-kept 3-bedroom family home in Palm Lakes Estate.

Discover contemporary living in this brand-new 3-bedroom townhome, perfectly nestled within the sought-after Palm Lakes Estate. Designed for comfort and style, this home offers an open-plan layout that seamlessly blends modern finishes with functional living spaces.

Step into a spacious lounge and dining area that flows effortlessly onto a private patio—perfect for entertaining or unwinding while surrounded by the estate's natural beauty. The sleek, fully fitted kitchen is a chef's delight, featuring high-end appliances and ample storage.

Each of the three bedrooms is generously sized, with the master suite boasting an elegant en-suite bathroom. Large windows invite natural light and offer serene views of the lush estate surroundings.

Living in Palm Lakes Estate means enjoying 24/7 security, picturesque nature trails, and an...

### Features

Pets Allowed		Interior		Exterior		Sizes	
	Yes	Bedrooms	3	Garages	2	Floor Size	220m <sup>2</sup>
		Bathrooms	3	Carports / Parkings	2	Land Size	330m <sup>2</sup>
		Kitchens	1	Security	Yes		
		Recep. Rooms	2	Pool	Yes		
		Furnished	No	Views	True		