



**Verashka Maharaj**  
082 904 5909  
verashka@primepropertysa.com



**Ronnie Naidoo**  
0834000780

ronnie@primepropertysa.com

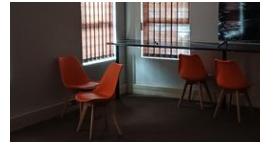
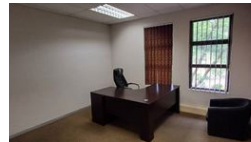
Contact Prime Property Umhlanga

031 566 5416

Shop 5  
7 on Millennium Boulevard  
Umhlanga Ridge  
4321



Web Ref CPP4129



**R29,700 pm**

**Gross Monthly Rental R29,700 Excl. VAT**

0 0

Prime Office unit to Lease in Derby Downs in Westville.

Prime Property presents a 220m<sup>2</sup> double storey Office unit to lease in Doncaster Park in Westville. Doncaster Park is located in the well known Derby Downs Office Park. Great Location. Easy access to Westwood Mall, major freeways, and transport routes. On a public transport route. The Park offers a serene and professional working environment.

Rental Price: R29 700.00 ex vat.  
Utilities: Prepaid (water and electricity).  
Lease Period: 3 years.  
Availability: Immediately.  
6 x parking bays.

The double storey office space will be ideal for an individual client as there is a common entrance and reception area. It would suit all types of end-users. This includes Law firms, accounting practices, consulting agencies, IT companies, marketing companies and similar applications.

Features Include:

## Features

**Zoning** Commercial

### Interior

Air Conditioning Yes  
Power 3 Phase Yes

### Exterior

Security Yes

### Sizes

Floor Size 220m<sup>2</sup>

