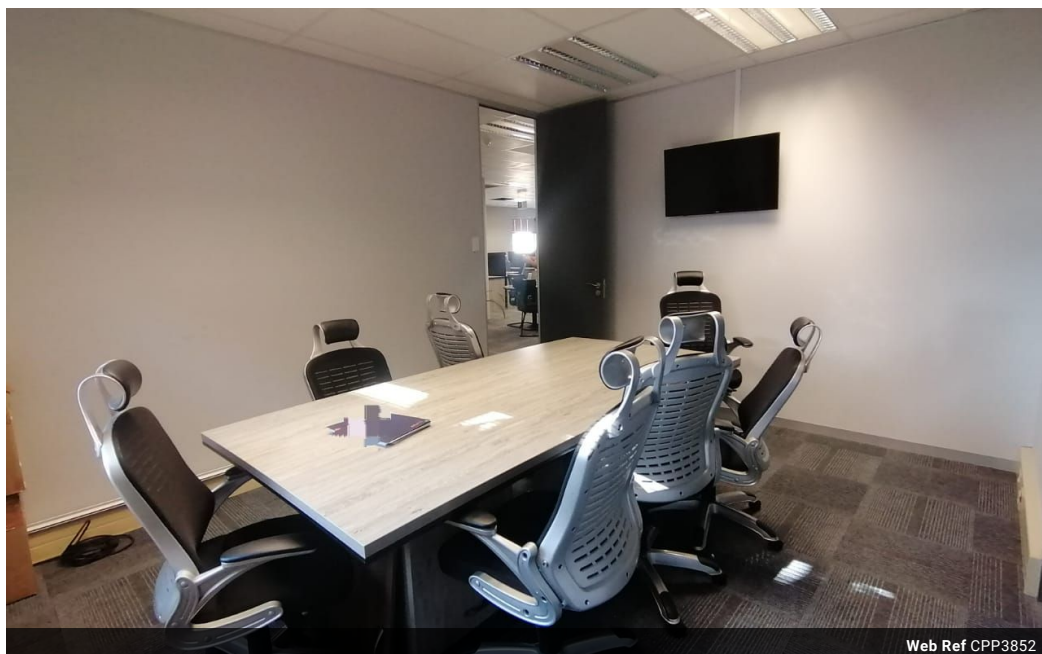


Sarisha Moodley
0684813594
sarisha@primepropertysa.com

Contact Prime Property
Umhlanga

031 566 5416

Shop 5
7 on Millennium Boulevard
Umhlanga Ridge
4321



R44,210 pm

Gross Monthly Rental R44,210 Excl. VAT

 0  0

Spacious commercial office space to rent in umhlanga

Discover a modern and versatile office space available for lease in the heart of Umhlanga . This expansive 221 square meter office is designed to meet the needs of dynamic businesses and offers a blend of functionality and style.

Key Features:

Open Layout: Enjoy a spacious open-plan area that can be customized to fit your specific requirements. Ideal for collaborative work environments, creative teams, or adaptable office configurations.

Private Offices: The space includes several private offices and meeting rooms, providing privacy and quiet areas for focused work or client meetings.

Boardroom office space.

Modern Amenities: Equipped with serve room, air conditioning ensure a comfortable working environment year-round.

Features

Zoning Commercial

Sizes

Floor Size 221m²