



**Netashnie Ramdulary**  
072 628 9112  
convey@primepropertysa.com

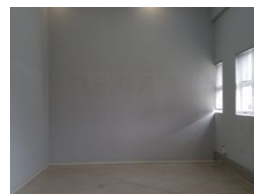
Contact Prime Property  
Umhlanga

031 566 5416

Shop 5  
7 on Millennium Boulevard  
Umhlanga Ridge  
4321



Web Ref CPP3956



**R17,250 pm**

**Gross Monthly Rental** R17,250 Excl. VAT

 0  3

### Prime Commercial Office Space Available – Perfect for Your Growing Business!

Unlock your business's potential with this premium office space in a sought-after location, offering the perfect blend of convenience, functionality, and style.

This 150 square meter office space priced at R115.00 per square meter is located on the 2nd floor, situated on Solstice Road, Umhlanga New Town Centre. This office space consists of a welcoming area, boardroom, private offices, and an open plan work area, a server room, a kitchenette and private ablution facilities. The unit also has central air-conditioning. Large windows provide plenty of natural light, creating a welcoming and energizing workspace.

Wi-fi facility available

The building has night security and 24 hour weekend security

Provision can be made for upto 3 dedicated parkings at the rate of R550.00 + vat per bay with ample parking for staff and visitors

### Features

<b>Building Name</b>	LBB House				
<b>Zoning</b>	Commercial				
<b>Interior</b>		<b>Exterior</b>		<b>Sizes</b>	
Air Conditioning	Yes	Security	Yes	Floor Size	150m <sup>2</sup>
		Open Parking Bays	3		