



Verashka Maharaj
082 904 5909
verashka@primepropertysa.com



Mxolisi Ngobese
072 445 5933

mx@primepropertysa.com

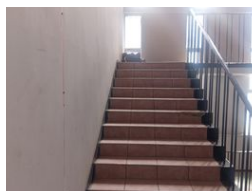
Contact Prime Property Umhlanga

031 566 5416

Shop 5
7 on Millennium Boulevard
Umhlanga Ridge
4321



Web Ref CPP4046



R44,960 pm

Gross Monthly Rental R44,960 Excl. VAT

0 0

Factory unit to Lease in Durban CBD.

Prime Property presents a 562m² factory unit on the second floor of a mixed-use building for rental in Durban CBD. The unit is located in Stalwart Simelane(Stanger) Street.

Centrally located. The warehouse is situated in a building that is about 200 meters from the Durban ICC and within walking distance to The Victoria Embankment. Easy access.

Large open plan warehouse space. Storage area. The windows make it light and airy. This factory will be ideal for a CMT factory, storage and similar applications.

The second floor is accessed from the common stairway. There is a fire escape located at the rear of the building which can be accessed from all floors.

Rental Price:R44 960.00 ex vat

Utilities separate.

Availability: Immediately.

Features

Zoning Commercial

Sizes

Floor Size 562m²

