



Prnil Maharaj
0315665416
prnil@primepropertysa.com

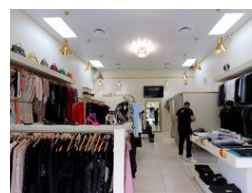
Contact Prime Property
Umhlanga

031 566 5416

Shop 5
7 on Millennium Boulevard
Umhlanga Ridge
4321



Web Ref CPP4168



R18,900,000

Monthly Levy R13,452 Excl. VAT

Monthly Rates R14,129 Excl. VAT

0 0

Ground Floor Retail For Sale

Prime Commercial Investment Opportunity in the Heart of Umhlanga

An exceptional opportunity to own a full commercial floor comprising six fully tenanted retail units, situated in the vibrant hub of Umhlanga, just minutes from Gateway Theatre of Shopping.

This 601 sqm space offers a solid investment in a high-demand location with excellent foot traffic, high visibility, and surrounded by prominent national and local businesses.

The property boasts:

Six sectional title units, all currently tenanted

Located in a bustling commercial node, ensuring consistent demand

Close proximity to Gateway, public transport, and major arterial routes

Ideal for investors seeking a high-yield, low-maintenance income generator

Features

Zoning Commercial

Sizes

Floor Size 601m²