



Mayur Soni  
0722350144  
mayur@primeproperty.co.za

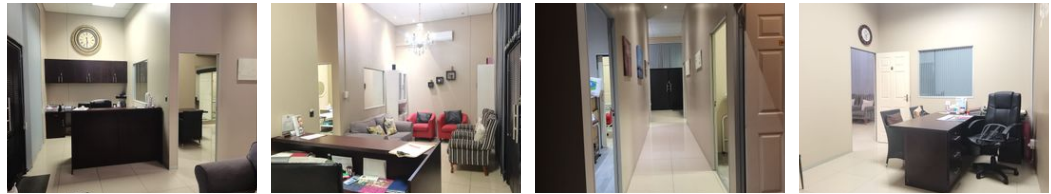
Contact Prime Property  
Umhlanga

031 566 5416

Shop 5  
7 on Millennium Boulevard  
Umhlanga Ridge  
4321



Web Ref CPP3825



R1,895,000

Monthly Levy R1,800 Excl. VAT

Monthly Rates R4,168 Excl. VAT



### Prime 78 sqm Office Space for Rent in Umhlanga Ridge

Unlock endless possibilities in this versatile 78 sqm space, ideal for retail, medical practice, office, or food outlet.

This space is perfect for Medical practices, Retail businesses, Office spaces or even Food outlets.

It's located in the Heart of uMhlanga and is closer to all amenities.

### Features

**Zoning** Commercial

**Sizes**  
Floor Size 78m<sup>2</sup>